

ENERGY. ACCOUNTABILITY. EXPERIENCE.

rowland.

# ROWLAND TX: BUSINESS TRANSFORMATION PARTNERS

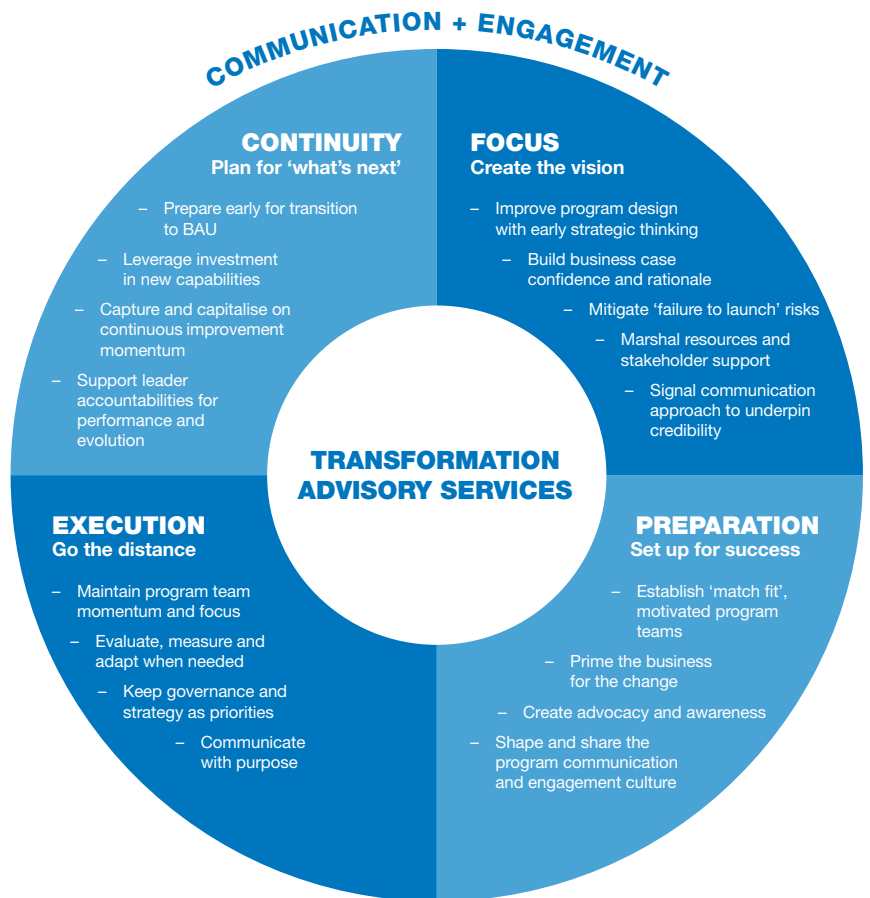
**ROWLAND TX IS THE DELIBERATE INTEGRATION OF DEEP TRANSFORMATION INSIGHT WITH COMMUNICATION AND PROGRAM DELIVERY EXPERTISE — HELPING TO SHAPE PERCEPTIONS, DRIVE EFFECTIVE ACTION AND BUILD REPUTATION.**

In these increasingly complex and volatile times, businesses must continue to evolve and grow, yet the stakes are high to guarantee return on investment in any transformation activity.

Rowland Tx is an experienced business transformation partner — built for now and with a difference.

We work as partners with business leaders, building transformative capabilities — both human and technological — at all stages of a program's lifecycle.

Our sights are set on helping to secure great results and enabling long-term success from transformation investments.



## COMMUNICATION, DIGITAL AND CREATIVE AGENCY

Level 2, 10 Eagle Street  
Brisbane QLD 4001 Australia

GPO Box 1430  
Brisbane QLD 4001 Australia

+61 7 3229 4499  
corporate@rowland.com.au

rowland.com.au



## WHY CHOOSE ROWLAND TX?

### Pragmatic and integrated

Rowland Tx is a highly practical and effective combination of:

- outcome, strategy execution and stakeholder alignment
- excellence in transformation planning and delivery leadership
- communication strategy and implementation expertise.

And when needed, our network of professional partners enhances capability and delivery effectiveness.

### Outcomes at every stage

Rowland Tx understands the energy and the effort needed to:

- build the case and secure resources for change
- craft a dynamic and focused team
- stay the course even when the goalposts move.

We bring:

- astute strategic thinking
- practical, trusted implementation leadership and support
- contemporary, rigorous methodologies and frameworks
- leading communication/engagement expertise
- digital/data-driven insights and solutions.

## ROWLAND TX SERVICES

Talk to us about how to tackle your transformation needs — from incremental to major investment — including:

- change program capability assessments
- program reframes/restarts — COVID context, opportunities, constraints
- program efficiency/effectiveness — doing more with less, building balance sheet resilience, future-proofing
- workforce resilience capabilities (including technology)
- sustainability initiative advice — environmental, social and governance practice assessments
- national/international partnering models and agreements
- organisational design change — mergers/acquisitions, workplace relocations, restructuring
- partnerships to develop robotic process automation capabilities, digitisation, Artificial Intelligence.

## CONNECT WITH US

### STUART WADDINGTON HEAD OF ROWLAND TX

[stuart.waddington@rowland.com.au](mailto:stuart.waddington@rowland.com.au)

### GEOFF RODGERS CHAIRMAN

[geoff.rodgers@rowland.com.au](mailto:geoff.rodgers@rowland.com.au)

### JANET HOUEN GROUP MANAGER, ORGANISATIONAL AND CHANGE COMMUNICATION

[janet.houen@rowland.com.au](mailto:janet.houen@rowland.com.au)

## COMMUNICATION, DIGITAL AND CREATIVE AGENCY

Level 2, 10 Eagle Street  
Brisbane QLD 4001 Australia

GPO Box 1430  
Brisbane QLD 4001 Australia

+61 7 3229 4499  
[corporate@rowland.com.au](mailto:corporate@rowland.com.au)

[rowland.com.au](http://rowland.com.au)